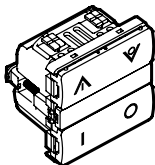
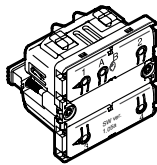


by **Schneider Electric**

## LK IHC® Wireless Dimmer Combi 250 W UNI



505DA101



505D0101

A: 0=without cover, 5=grey, 6=white, 8=coalgrey

### For your safety



#### **DANGER**

**Risk of serious damage to property and personal injury, e.g. from fire or electric shock, due to incorrect electrical installation.**

Safe electrical installation can only be ensured if the person in question can prove basic knowledge in the following areas:

- Connecting to electrical installations
- Connecting several electrical devices
- Laying electric cables

These skills and experience are normally only possessed by skilled professionals who are trained in the field of electrical installation technology.

If these minimum requirements are not met or are disregarded in any way, you will be solely liable for any damage to property or personal injury.



#### **DANGER**

**Risk of death from electric shock.**

The outputs may carry an electrical current even when the device is switched off. Always disconnect the fuse in the incoming circuit from the supply before working on connected loads.



#### **CAUTION**

**The dimmer may be damaged!**

- Always operate the dimmer according to the technical data provided.
- The dimmer is designed for sinusoidal mains voltages.

### Application

The LK IHC Wireless Combi unit is used where a combined wireless pushbutton switch is wanted together with turning on or light dimming locally. It is an advantage to replace an existing main switch

when renovating. The unit can be used with IHC Wireless "Stand-alone" system and IHC Control.

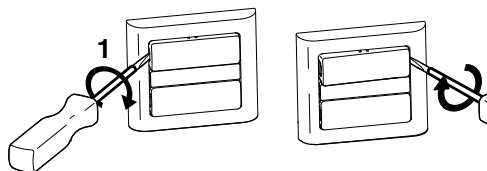
### Design

The combi light dimmer has a dimmable outlet. This model can dim filament lamps and 12 V halogen lamps with either iron-core or electronic transformer, but not simultaneously. It can also be used with certain types of LED lamps and energy-saving light bulbs - see the light dimmer and LED guide at [www.lk.dk/dimmertool](http://www.lk.dk/dimmertool).

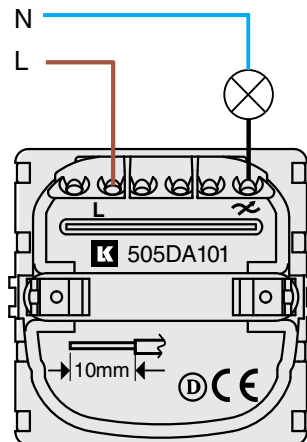
Ordinary non-dimmable energy-saving light bulbs and other types of loads must not be connected to the dimmer. The product has a connection for phase and switch wire.

The pushbutton switch and outlet can be programmed independently of each other. The outlet can be controlled remotely using the LK Wireless system and the pushbutton switch can remotely control other LK Wireless products.

### Programming



To program the dimmer, the enclosure must be removed first. This can be done by carefully inserting a screwdriver or similar tool into the left and right side respectively and wiggling/tilting it until the enclosure loosens at the sides. Then remove the enclosure, and you get access to



buttons and LED for programming. The dimmer must be connected to voltage and load in order to be programmed. The procedure for programming the dimmer is the same as for other IHC Wireless receivers and is explained in the common guide for IHC Wireless (019D904122). If the dimmer is to be used with IHC Control, it is inserted as a component in IHC Visual and linked. The dimmer's operating parameters can be set by means of IHC Visual. For details, refer to the IHC Control manual.

Operating parameters:

- Ramp times
- Min./max. setting
- Operating mode (auto/leading edge/trailing edge)

Note: Changed operating parameters are maintained in case of deletion of programming or reprogramming to stand-alone system.

## Necessary accessory

For inserts without rockers you need to buy rockers before the product will work.

## Technical data

Nominal voltage	230 V AC / 50 Hz
Nominal power	250 W
Power consumption	Max. 4 W (at full load)
Standby	< 1 W
Min. load	20 W
Loads	
Filament lamps	250 W
LED	125 W, max. 10 pcs. See "Dimmer and LED guide" for tested types.
Halogen lamps	
230 V	250 W
12 V (electronic or FE-transformer)	250 W
Connection	Phase and switch wire
Terminals	Screwless terminals, max. 2 x 2,5 mm <sup>2</sup>
Transmission frequency	868 MHz
Operating temperature	-5 to +30 °C
Humidity	20 - 95 % RH, non-condensing
Fuse rating	Max. 13 A
Protection rating	IP20
Module size	1 M FUGA
Directives/Standards	See online catalogue
Approvals	DEMKO

## Lauritz Knudsen

Schneider Electric Danmark A/S · Lautrupvang 1 · 2750 Ballerup · Telefon 88 30 20 00 · www.lk.dk

### Dimmer and LED guide

Our guide on the internet can be used to easily find LED light sources that can be used. The address is: [lk.dk/dimmertool](http://lk.dk/dimmertool)



### Tangent designer

You can use our website to design your own rockers with text and symbols. The address is [bestil.lk.dk](http://bestil.lk.dk).

